

CERTIFIED LAND CORNER RECORDATION

DESCRIPTION OF CORNER EVIDENCE FOUND, AND ORIGINAL RECORD (If known)

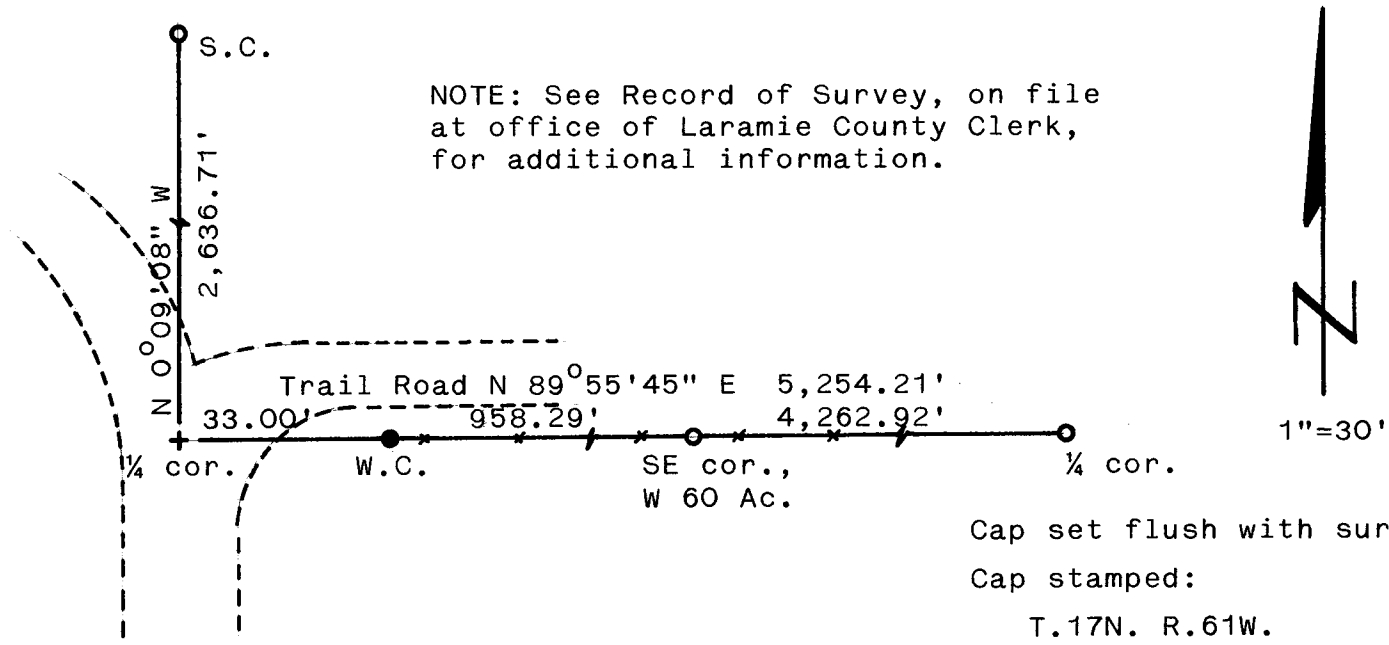
LOCATION
 1/4
 S.10 S.11
 T.17N., R.61W.
 6th P.M.

No evidence of corner monument found. Corner position re-established from fence line evidence, as shown in sketch. Position supported by measurements to adjacent corners.
 G.L.O. record - Limestone 16 x 12 x 3 set 10 in deep marked 1/4 on W side for 1/4 Sec Cor.
 G.L.O. contract survey by Chas. A. Caton in 1873.

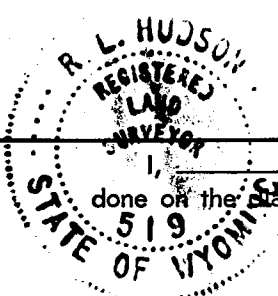
DESCRIPTION OF MONUMENT AND ACCESSORIES ESTABLISHED TO PERPETUATE THE ORIGINAL LOCATION OF THIS CORNER:

At the corner: No monument set.
 Accessories: A 5/8" dia. x 24" long rebar with 2" dia. aluminum cap, set and marked as a witness corner, bears N 89°55'45" E, 33.00 feet distant.

SKETCH, WITH COURSE AND DISTANCE TO ADJACENT CORNER IF DETERMINED IN THIS SURVEY.
 (May Sketch or Paste Reproduction on Reverse Side.)



Cap set flush with surface.
 Cap stamped:
 T.17N. R.61W.
 1/4 W.C.
 S.10 S.11 33.0'
 LS 519 1977



I, R. L. Hudson certify that I have carefully performed or reviewed the work done on the diagrammed corner as reported on this recordation form and approve the same.

R. L. Hudson Wyoming L.S. No. 519
 Signature of Surveyor Registration No.

STATE OF WYOMING,
 Office of Clerk and Recorder,
 County of Laramie

This "corner record" was filed for record on the 21 day of December, 1977, was noted on the cross-index plat and is assigned page No. _____, in book No. _____.

Janet C Whitehead
 County Official

Cross Index No. <u>6-17</u>	T. _____	R. _____	Mer. _____
	T. <u>17</u>	R. <u>61</u>	Mer. _____
	T. _____	R. _____	Mer. _____
	T. _____	R. _____	Mer. _____
	T. _____	R. _____	Mer. _____
	T. _____	R. _____	Mer. _____
	T. _____	R. _____	Mer. _____